

PTC Windchill® Workgroup Manager for SolidWorks®

DELIVERING THE POWER AND BENEFITS OF PTC WINDCHILL TO THE SOLIDWORKS ENVIRONMENT

Designers can now perform everyday design tasks in their familiar MCAD environment, while using PTC Windchill to manage SolidWorks data throughout its lifecycle.

Managing SolidWorks data within PTC Windchill allows you to capture and control all of your design information within a single enterprise environment, manage the data under a single product structure, and easily leverage that information across the extended organization in a controlled manner.

Key benefits

Improve collaboration

- Fully incorporate the use of SolidWorks data in product development processes that span multiple organizations
- Extend the sharing of design data beyond engineering, departmental and corporate boundaries using standard Internet technology

Improve data quality

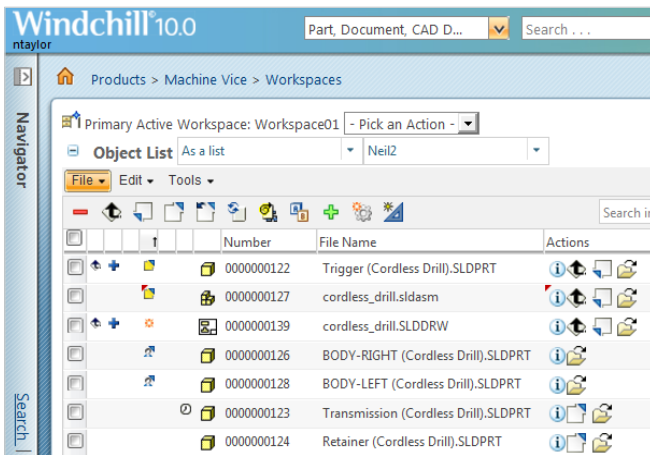
- Eliminate mistakes associated with duplicate or incomplete data by managing data from multiple CAD systems in a single, controlled location under the umbrella of a single product structure
- Centralize the management of business processes such as change control
- Provide all relevant groups with accurate, up-to-date product content information that's held in a single location

Improve engineer productivity

- Improve efficiency through design data reuse and a reduction in the number of design steps
- Enable the designer to focus on design activities rather than data management by embedding PTC Windchill actions within the SolidWorks application
- Minimize engineer interruptions by utilizing background processes to upload files to PTC Windchill, thus allowing the designer to continue using SolidWorks without having to wait for database actions to complete

Increase enterprise efficiency

- Reduce the number of product development systems by providing one system that can manage multiple sources of data (e.g., different CAD and documentation formats)
- Enforce standard design processes across multiple design projects and organizations



Display SolidWorks file types, as well as different status icons, within PTC Windchill.

Features

Support key SolidWorks data file types and features

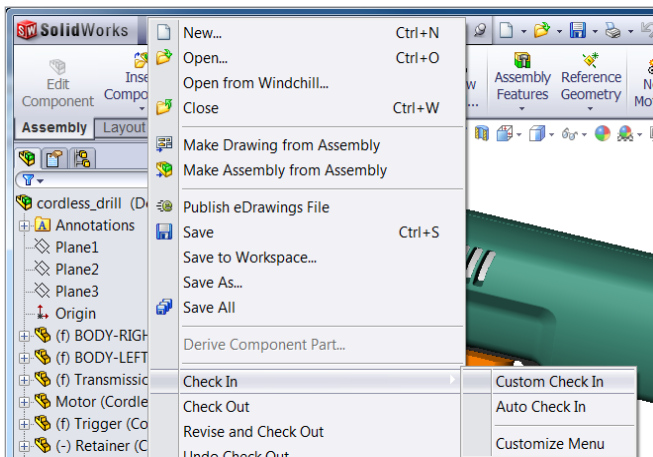
- Store different SolidWorks file types in PTC Windchill, including: .sldprt, .sldasm, .slddrw, .sldlfp, .prt, .prtdot, .asmdot, .drwdot, .edrw, .eprt, .easm and .sldprt
- Recognize relationships and dependencies between SolidWorks files (e.g., between parts, assemblies and drawings), and represent those references in the PTC Windchill environment
- Automatically associate files related to the SolidWorks drawing, such as images, DXF files and Design Table spreadsheets
- Open files directly in SolidWorks when browsing or searching PTC Windchill
- Automatically manage local working directories with the PTC Windchill Workgroup Manager
- Manage SolidWorks configurations
- Copy or rename data in the PTC Windchill environment while maintaining referential integrity between SolidWorks files
- Utilize the SolidWorks Import/Export tool to transfer data sets to and from PTC Windchill
- Support for SolidWorks Toolbox and Virtual Components

Exchange attribute/property information between SolidWorks files and the PTC Windchill environment

- Expose SolidWorks attributes to PTC Windchill for searching purposes
- Make PTC Windchill attributes available within SolidWorks for purposes such as displaying values on drawing borders
- Allow SolidWorks attributes to be edited in the PTC Windchill environment
- Eliminate the need to enter attributes in both the PTC Windchill and SolidWorks environments
- Reduce the amount of time designers spend entering information in SolidWorks by having certain attributes, such as information on drawing borders, automatically populated by PTC Windchill

Integrate the SolidWorks environment within PTC Windchill and its related enterprise processes

- Utilize PTC Windchill tools for managing SolidWorks data within the product structure, development process, and lifecycle
- Enable Check-In and Check-Out of named design baselines, latest configurations, or criteria such as latest released configuration or effectivity date
- Manage SolidWorks data within the PTC Windchill engineering change management process
- Eliminate BOM redundancy and errors by synchronizing the enterprise BOM with the SolidWorks structure
- Allow SolidWorks data to be part of an enterprise BOM structure that can contain data from many different CAD systems
- Enable version control on SolidWorks data to record complete traceability of changes and design development
- Enable concurrent development, as PTC Windchill can track all related activities and convey that information to other members of the design team
- Utilize status icons to quickly inform SolidWorks designers and other users about the condition of SolidWorks data within PTC Windchill



Embedded PTC Windchill menu option within the SolidWorks environment.

Embed PTC Windchill in the SolidWorks application

- Open SolidWorks files, stored in PTC Windchill, directly from SolidWorks
- Perform key PTC Windchill actions from within the SolidWorks environment, such as Revise, Check-In and Check-Out
- Inform SolidWorks users on any relevant PTC Windchill events via pop-up messaging system
- Upload SolidWorks files to the PTC Windchill database with background processes
- Use a comprehensive set of preferences to personalize and streamline your SolidWorks interaction with PTC Windchill

Exchange and share design data in a fully collaborative environment

- Enable controlled sharing of SolidWorks data across the enterprise
- Utilize generic visualization collaboration tools to provide visibility of SolidWorks designs to the entire enterprise, regardless of whether the user has access to or knowledge of SolidWorks
- Make SolidWorks design data available to external audiences who have the proper system access

Platform specifications

- Prerequisite: PTC Windchill PDMLink®, PTC Windchill ProjectLink™
- Operating Systems: Microsoft® Windows® (32-bit & 64-bit): XP, Vista, Windows 7
- Browser: Internet Explorer® & Mozilla Firefox®
- Languages: English, Chinese (Traditional), Chinese (Simplified), German, Italian, Japanese, Korean, French, and Spanish

For more information

For more information on PTC Windchill, please visit: PTC.com/product/windchill

© 2012, PTC. All rights reserved. Information described herein is furnished for informational use only, is subject to change without notice, and should not be construed as a guarantee, commitment, condition or offer by PTC. PTC, the PTC Logo, PTC Windchill, Relex, PTC Windchill PDMLink, PTC Windchill MPMLink, and all PTC product names and logos are trademarks or registered trademarks of PTC and/or its subsidiaries in the United States and in other countries. All other product or company names are property of their respective owners. The timing of any product release, including any features or functionality, is subject to change at PTC's discretion.

J1213-PTC Windchill Workgroup Manager for SolidWorks-DS-EN-1012