



# CONTROLS Pro Studio

Create Quotes and Designs in Record Time

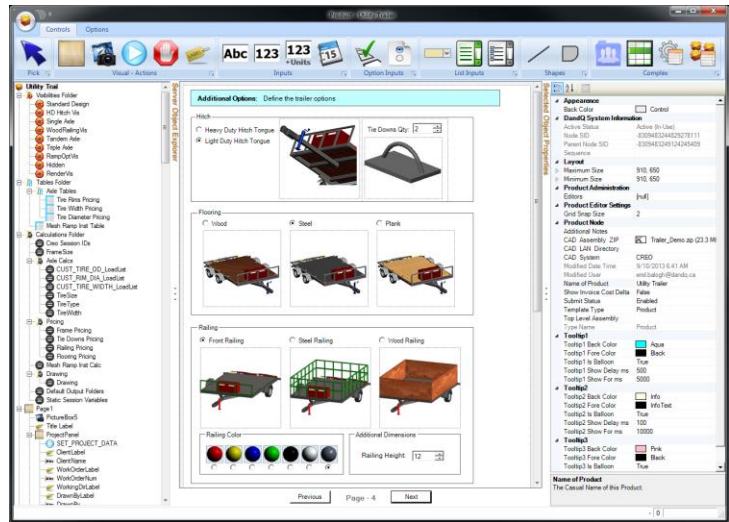
With CONTROLS Pro Studio (CPS), engineers and designers can create designs much faster using powerful, simple-to-use automation tools that are tailored towards engineer to order custom products.

Controls Pro Studio is a Rapid Application Development (RAD) software tool bridging the gap between sales, design, engineering and manufacturing which integrates with PTC's Pro/Engineer®/Creo Parametric®, Dassault Systèmes SolidWorks® and Autodesk Inventor®.

Controls Pro Studio allows users to quickly output quotes, orders and manufacturing plans for engineer-to-order products helping the company become more profitable. It addresses the industry's need for engineer-to-order products by automating the tasks normally associated to design and engineering professionals; making sure a product meets engineering, safety and design requirements for a unique customer need. These tasks take professionals a significant time to process, but with ControlsPro Studio's CONTROL BASED DEFINITIONS (or CBD) companies will minimize manual involvement allowing engineers time to do what they do best: innovate and produce new products.

## Key Capabilities and Benefits

- **Generate** automated and interactive interfaces to drive the project, including design checks and rules for validity of the design
- **Centralize** business rules
- **Generate** automated configurations of parts and sub-assemblies for manufacturing using selected designs driven from the interactive interface
- **Generate** automated validated design information, including 3D/2D visuals, for each configuration run by the interactive interface
- **Manage** automatically all revisions and all engineering data and quotes in secure vaulting system
- **Sales & Marketing** - Manage customer contact, promote interest in a unique product, and collect the detailed specifications required to accurately engineer and price a solution for the customer's requirement



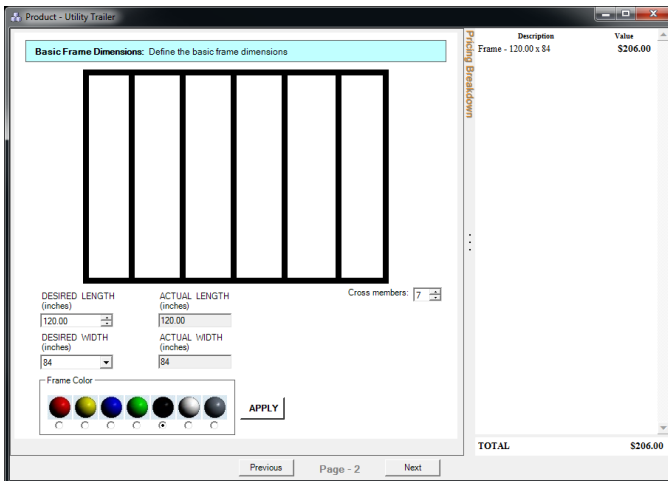
Putting together smart wizard like input screens eliminates confusion and incompatible designs allowing non-technical users ability to produce drawings, 3D models and bills of materials.

- **Application Engineering** - Respond to Sales input to engineer a product solution within the boundaries of the competency of the manufacturer
- **Design Engineering** - Prepare a detailed geometric design of the engineered product solution with associated Bill of Materials data identifying all of the raw materials and purchased components needed for production, completely automating the basic principles for each individual proposal
- **Purchasing** - Reference the Bill of Materials with the company's cost standards maintained within the ERP system to get the cost of acquiring all components required to build the designed product
- **Manufacturing Engineering** - Prepare a detailed Process Plan identifying all of the tooling, setup, fabrication, machining, welding, assembly, CNC programs, and testing operations required to produce the product
- **Cost Estimating** - Reference the Process Plan with the company's capacity standards maintained within the ERP system to get the cost of machine time and labor required to build the designed product
- **Technical Documentation** - Generate professional sales visuals, quotation drawings, production drawings, and process instructions to win a purchase order and guide production activities
- **Design Control** - Track changes from the quoted configuration to ensure accurate invoicing and project history

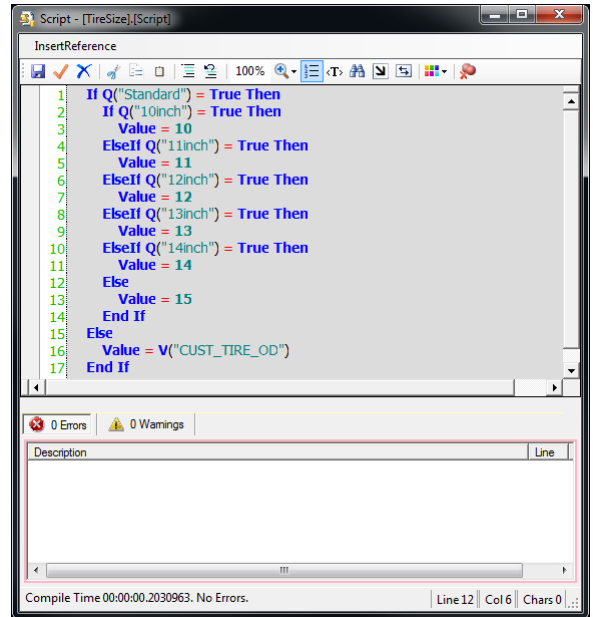
# CONTROLS Pro Studio

## Features and Specifications

- Powerful full **.NET Logic Engine**, validate code instantly, Provides constants and static methods for trigonometric, logarithmic, and other common mathematical functions
- **Unlimited** design flexibility
- **Copy, Cut, Paste** controls, products, rules, quotes, and rules
- Perform complex Searches, Lookups, and Cross References for **'Table Based Design'** product designs
- Apply **Visibility** rules for the creation of dynamic interfaces to hide and show inputs, images, and other controls
- Apply **Limits** to enforce proper submission of product inputs and calculated results
- **Bi-directional CAD** integration, write and read to **CAD**
- Comprehensive **CAD** functions Library
- **'Watch'** window to monitor calculated values and script execution in real time
- **Regeneration Manager** window to aide in CAD interaction and debugging processes
- Real Time generation of **pricing**
- Generate **Templates** for automatic proposals and quotes
- Support for **Configurable Modules** which can be used in multiple **Configurable Products**
- Full Support of **Engineer to Order** systems, **create** and **design** brand **new** parts and assemblies at any time



The touch screen compliant questionnaire app gives users immediate feedback on valid configurations and costs.



The script editor validates syntax instantly, giving users powerful CAD manipulation capabilities as well as full support of all VB.NET, VB Script and Visual Basic languages.

## Deployment Options

- Project based ... Start small ... quick ROI
- **Growth** over time
- **Low** ongoing costs
- **Automatic** updates
- **Cloud Based** or **On Premise**
- **Independent, Quick Start, Turn Key** implementation options

**CONTROLS Pro Studio** improves a manufacturer's sales process for custom products by giving sales representatives, and channel partners the ability to specify new product configurations without the need to interact with the engineering department.

For advanced designs it allows engineers to optimize their work flow and validate designs with fully customizable wizards that can be defined by the customer! (minimal scripting knowledge required using simple .NET standard syntax)

## On Premise Server System Requirements

- Minimum - Quad Core CPU, 2.13 GHz
- Minimum - 10-1000 GB HDD (depending on usage)
- Minimum - 4GB RAM
- Required- Windows Server OS (2003+)
- Required - Microsoft SQL Server (2008+)
- Optional - Internet Information Services (IIS) 6.0+